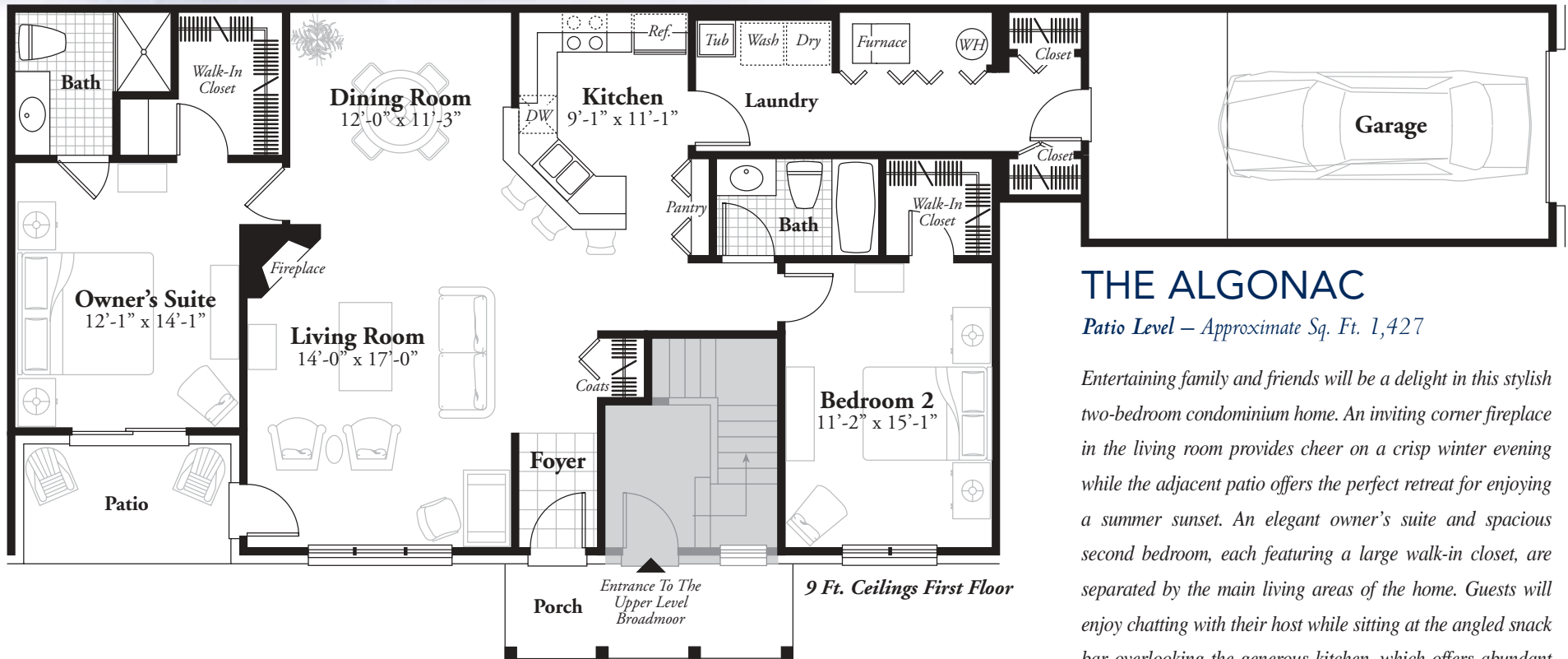


MAPLE CROSSING



THE ALGONAC

Patio Level – Approximate Sq. Ft. 1,427

Entertaining family and friends will be a delight in this stylish two-bedroom condominium home. An inviting corner fireplace in the living room provides cheer on a crisp winter evening while the adjacent patio offers the perfect retreat for enjoying a summer sunset. An elegant owner's suite and spacious second bedroom, each featuring a large walk-in closet, are separated by the main living areas of the home. Guests will enjoy chatting with their host while sitting at the angled snack bar overlooking the generous kitchen, which offers abundant counter space and a convenient pantry. Easy access to the one-car garage, ample laundry area and twin storage closets makes bringing in groceries a breeze.

Located on Maple Rd., west of Benstein Rd.



P 248-668-9430 F 248-668-9433

These are preliminary plans and are subject to change without notice. Renderings and illustration are artist's concepts and are only representative.

All information contained herein was accurate at time of publication. In order to maintain a high degree of quality and incorporate improvements with greater facility and economics, we reserve the right to make changes in price, material specifications or materials or to change or discontinue models without notice or obligation. Floor plan dimensions and square footage are approximate. Square footage calculated from exterior wall, master deed reflects interior dimensions.

© Copyright MJC Maple Crossing LLC and architect copyright floor plans and elevations. Any use without approval by MJC Maple Crossing LLC shall be subject to prosecution.

