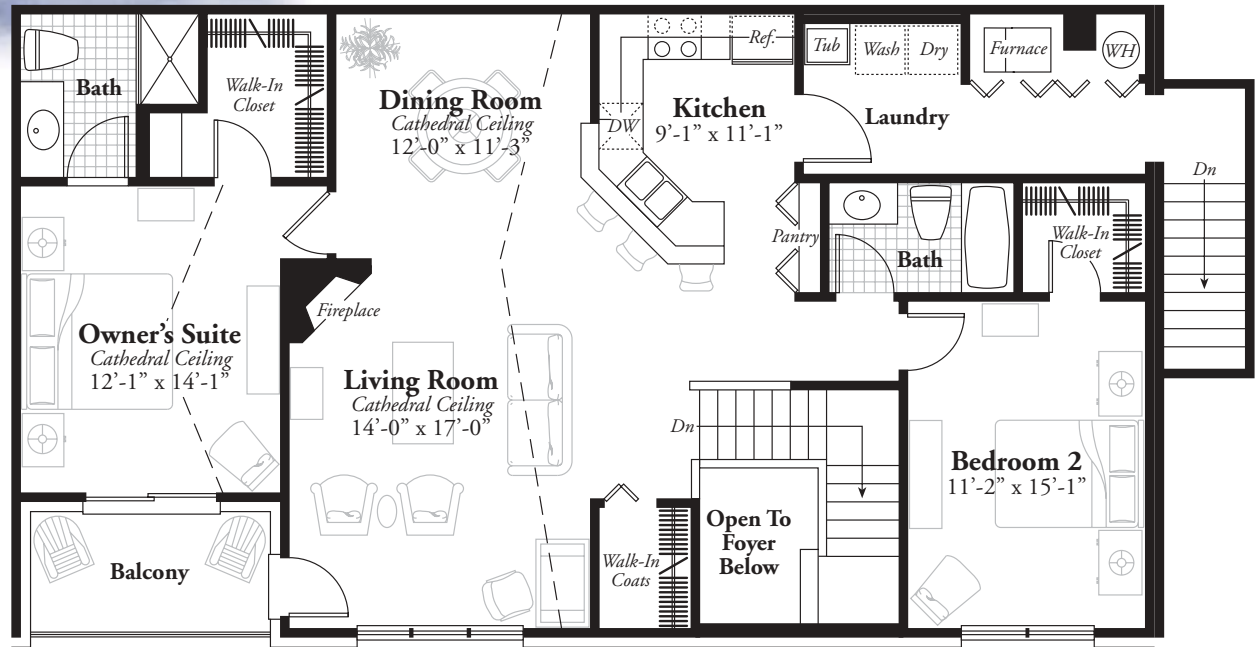
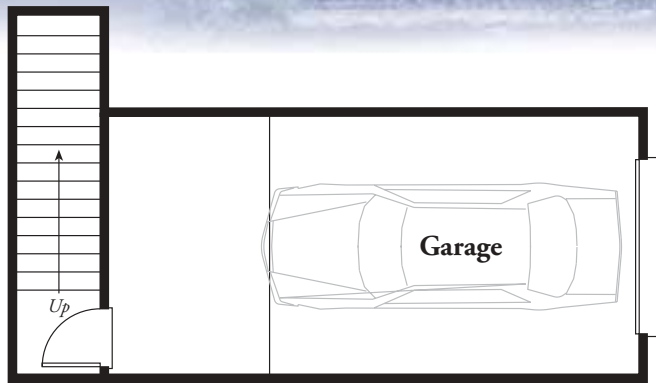


MAPLE CROSSING



THE BROADMOOR

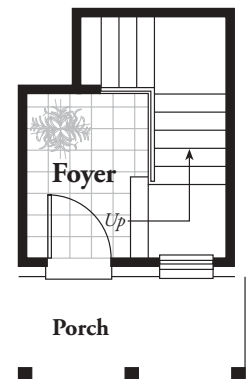
Terrace Level – Approximate Sq. Ft. 1,587

The private covered porch and foyer lead to elevated living space that is elegant in tone and contemporary in design. Soaring cathedral ceilings in the living room and dining room are accented by a corner fireplace and sunny windows. A centrally located kitchen with an angled snack bar provides plenty of space for easy meal preparation and a pantry for handy storage of essentials. The spacious owner's suite with its lofty ceiling and walk-in closet creates the perfect private retreat, with access to a balcony for enjoying warm afternoons. A second bedroom is separated from the owner's suite by the main living areas of the home and features a walk-in closet and easy access to a full bath. An attached one-car garage and laundry area adjacent to the kitchen offer outstanding convenience.

Located on Maple Rd., west of Benstein Rd.



P 248-668-9430 F 248-668-9433



These are preliminary plans and are subject to change without notice. Renderings and illustration are artist's concepts and are only representative.

All information contained herein was accurate at time of publication. In order to maintain a high degree of quality and incorporate improvements with greater facility and economics, we reserve the right to make changes in price, material specifications or materials or to change or discontinue models without notice or obligation. Floor plan dimensions and square footage are approximate. Square footage calculated from exterior wall, master deed reflects interior dimensions.

© Copyright MJC Maple Crossing LLC and architect copyright floor plans and elevations. Any use without approval by MJC Maple Crossing LLC shall be subject to prosecution.

