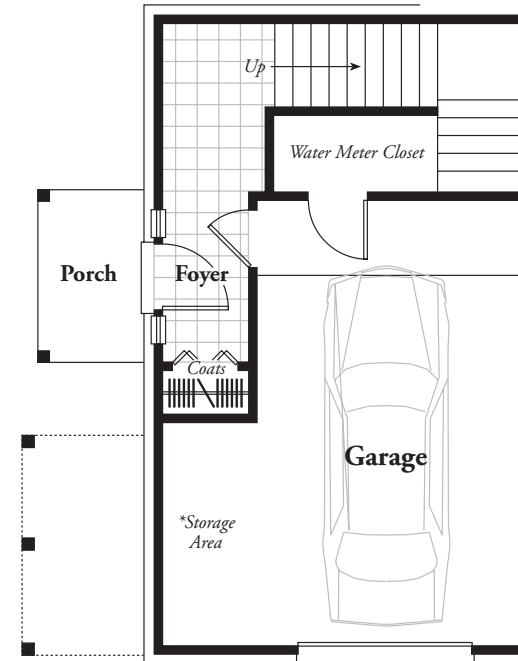
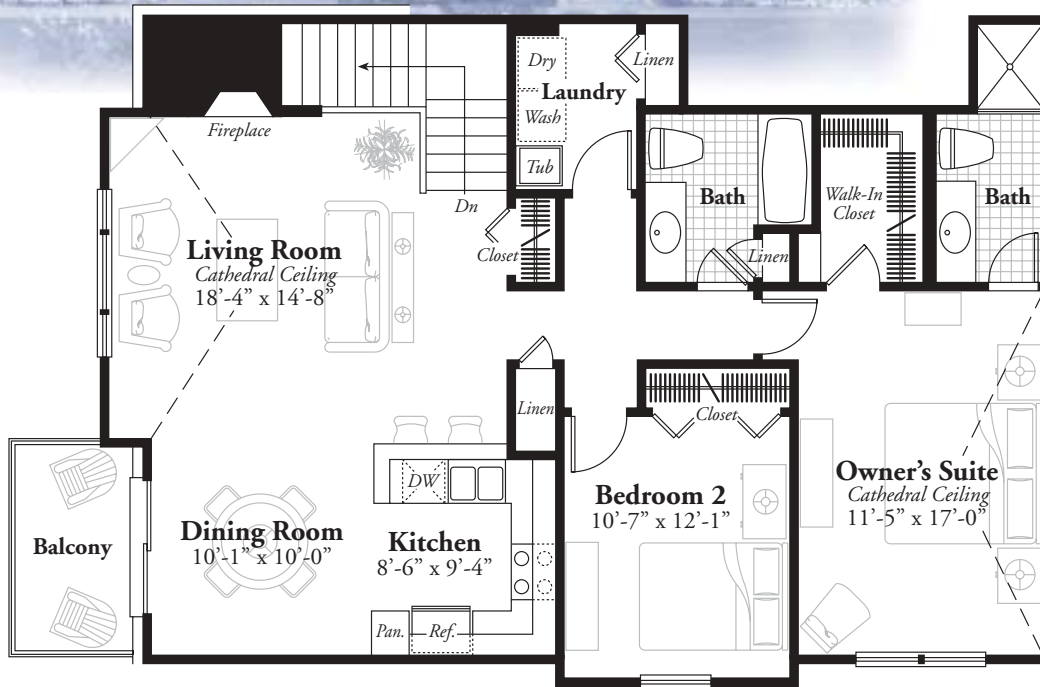


# MAPLE CROSSING



\*Three of four units per building have open storage area in garage.  
See Sales Associates for details.

## THE CLAIRMONT

Carriage Level – Approximate Sq. Ft. 1,332

This cozy two-bedroom condominium home exudes the essence of carefree living. A covered porch opens to the staircase leading up to a spacious living room with cathedral ceiling and a central fireplace. Sliding glass doors reveal a balcony just off the dining room, creating a perfect spot for a late evening supper and stargazing. The convenient laundry area is just steps from a full bath, handy linen closet and both of the bedrooms. A cathedral ceiling in the owner's suite adds an elegant touch, enhanced by the walk-in closet and private bath. The main level one-car garage provides both ample storage space and easy access to the upper level living area.

Located on Maple Rd., west of Benstein Rd.



P 248-668-9430 F 248-668-9433

*These are preliminary plans and are subject to change without notice. Renderings and illustration are artist's concepts and are only representative.*

*All information contained herein was accurate at time of publication. In order to maintain a high degree of quality and incorporate improvements with greater facility and economics, we reserve the right to make changes in price, material specifications or materials or to change or discontinue models without notice or obligation. Floor plan dimensions and square footage are approximate. Square footage calculated from exterior wall, master deed reflects interior dimensions.*

*© Copyright MJC Maple Crossing LLC and architect copyright floor plans and elevations. Any use without approval by MJC Maple Crossing LLC shall be subject to prosecution.*



EQUAL HOUSING OPPORTUNITY