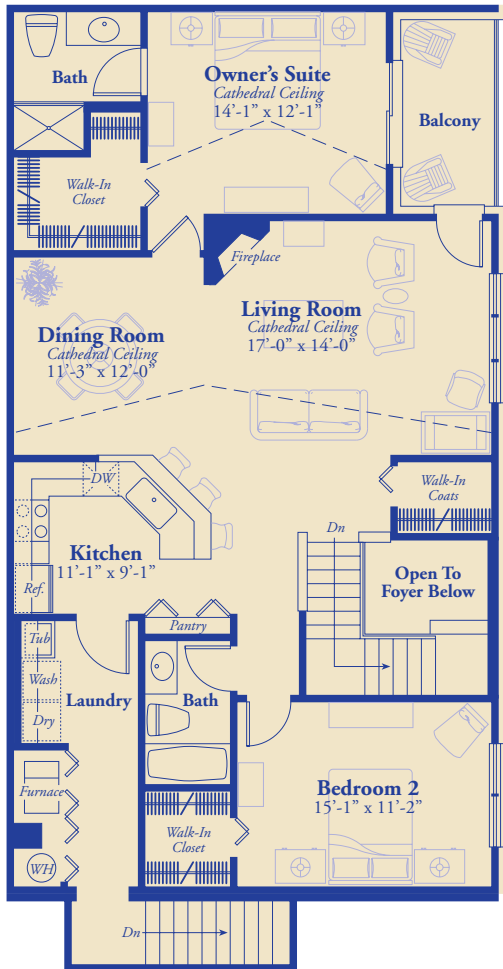


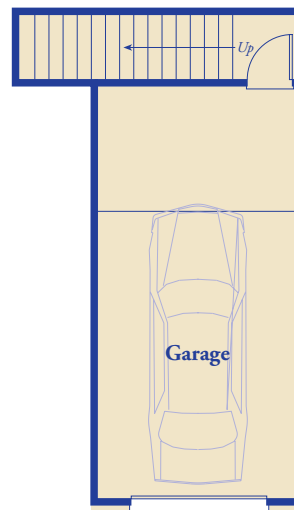
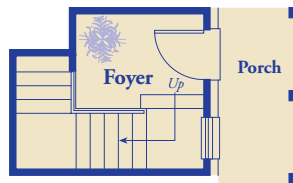
# The BROADMOOR

The private covered porch and foyer lead to elevated living space that is elegant in tone and contemporary in design. Soaring cathedral ceilings in the living room and dining room are accented by a corner fireplace and sunny windows. A centrally located kitchen with angled snack bar provides plenty of space for easy meal preparation and a pantry for handy storage of essentials. The spacious owner's suite with its lofty ceiling and walk-in closet creates the perfect private retreat, with access to the balcony for enjoying warm afternoons. A second bedroom is separated from the owner's suite by

the main living areas of the home and features a walk-in closet and easy access to a full bath. An attached one-car garage and laundry area adjacent to the kitchen offer outstanding convenience.



UPPER LEVEL



MAIN LEVEL

Located on the east side of Gratiot, north of 23 Mile Rd..

**586.421.2078**



All information contained herein was accurate at the time of publication. In order to maintain the high degree of quality and incorporate management with greater facility and economy, we reserve the right to make changes in price, specifications, materials or to change or discontinue models without notice or obligation. Floor plan dimensions are approximate. Square footage calculated from exterior wall, master deed reflects interior dimensions. Renderings and illustrations are artist's concept and are only representative.

© Copyright