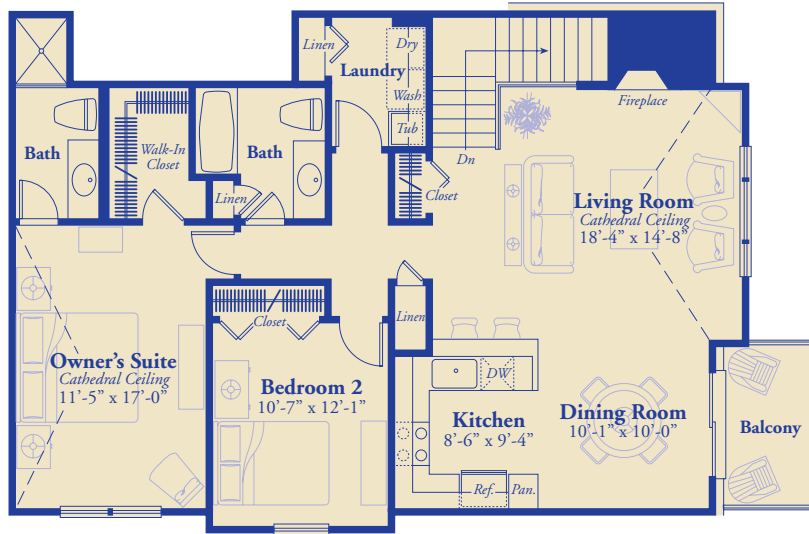
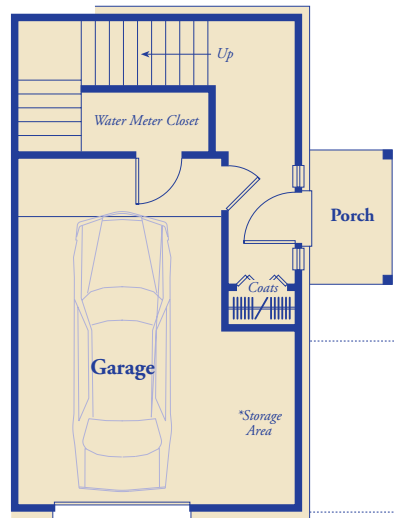


The CLAIRMONT



UPPER LEVEL

This cozy 2-bedroom condominium home exudes the essence of carefree living. A covered porch opens to the staircase leading up to a spacious living room with cathedral ceiling and a central fireplace. Sliding glass doors reveal a balcony just off the dining room, creating a perfect spot for a late evening supper and stargazing. The convenient laundry area is just steps from a full bath, handy linen closet and both of the bedrooms. A cathedral ceiling in the owner's suite adds an elegant touch, enhanced by the walk-in closet and private bath. The main level one-car garage provides both ample storage space and easy access to the upper level living area.



*Three of four units per building have open storage area in garage. See Sales Associates for details.

MAIN LEVEL

Located on the east side of Gratiot, north of 23 Mile Rd..

586.421.2078



All information contained herein was accurate at the time of publication. In order to maintain the high degree of quality and incorporate management with greater facility and economy, we reserve the right to make changes in price, specifications, materials or to change or discontinue models without notice or obligation. Floor plan dimensions are approximate. Square footage calculated from exterior wall, master deed reflects interior dimensions. Renderings and illustrations are artist's concept and are only representative.

© Copyright