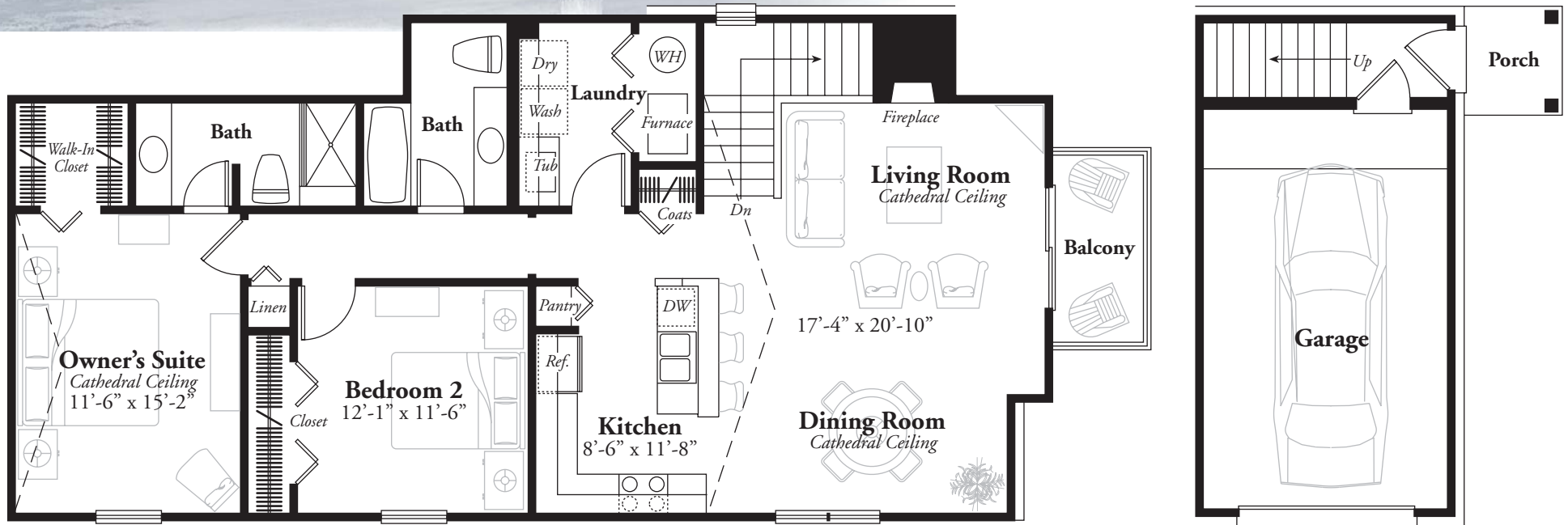




NOTTINGHAM VILLAGE



THE CHESTERFIELD

BUILDINGS 1 - 4

This cozy 2 bedroom condominium exudes the essence of carefree living. A covered porch opens to the staircase leading up to a spacious living room with cathedral ceilings and a focal point fireplace. Sliding glass doors lead to a balcony just off the dining room, creating the perfect spot for al fresco dining. The elegant owner's suite features a cathedral ceiling, spacious walk-in closet and private bath. The main level one-car garage provides both ample storage and easy access to the upper level living area.

Located on St. Martins Ave.,
west of Middlebelt Road in Livonia



P 248-615-9107 F 248-615-9160

These are preliminary plans and are subject to change without notice. Renderings and illustration are artist's concepts and are only representative.

All information contained herein was accurate at time of publication. In order to maintain a high degree of quality and incorporate improvements with greater facility and economics, we reserve the right to make changes in price, material specifications or materials or to change or discontinue models without notice or obligation. Floor plan dimensions and square footage are approximate. Square footage calculated from exterior wall, master deed reflects interior dimensions.

MJC Nottingham Village LLC and architect copyright floor plans and elevations. Any use without approval by MJC Nottingham Village LLC shall be subject to prosecution.

