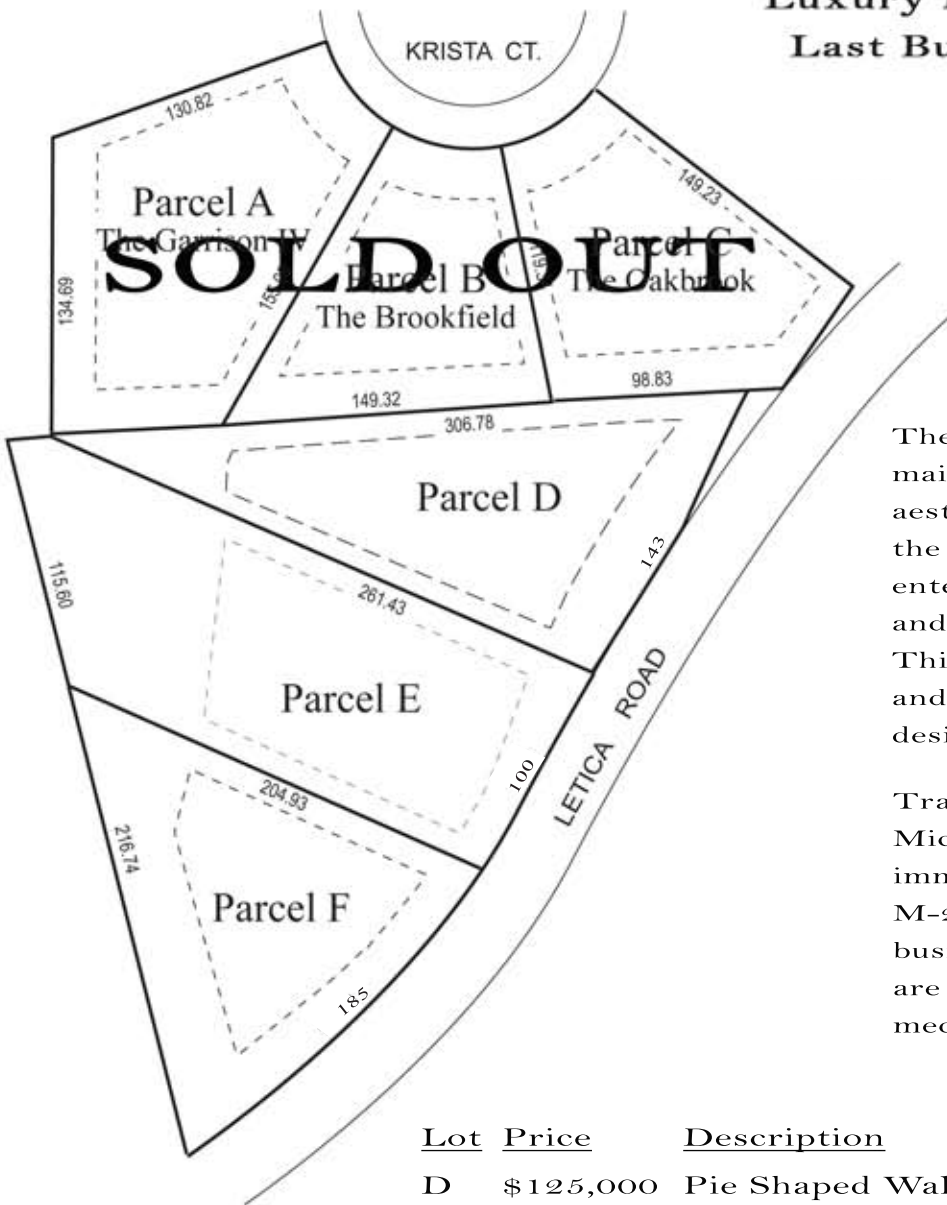




at Stony Pointe North

**Luxury Homes in Scenic Rochester
Last Buildable Lots in Rochester**

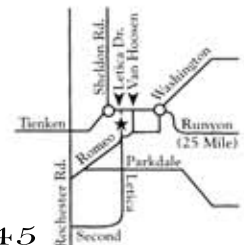


The entire Rochester area has maintained a quaint and pleasant aesthetic atmosphere throughout the past hundred years. Plus, endless entertainment, educational opportunities, and shopping are right at your doorstep. This combination of historical ambiance and today's conveniences are a much desired and hard find.

Travel to anywhere in Southeastern Michigan is fast and easy with immediate access to I-75, M-59 and M-24. Hubs of technology and businesses are within an easy drive, as are all community services and modern medical facilities.

<u>Lot</u>	<u>Price</u>	<u>Description</u>
D	\$125,000	Pie Shaped Walkout
E	\$140,000	Pie Shaped Daylight, Possible Walkout
F	\$125,000	Pie Shaped Walkout

Located North off Letica and South of 25 Mile



Luxury Homes in Scenic Rochester
Sales Information Available at: 586-226-3745