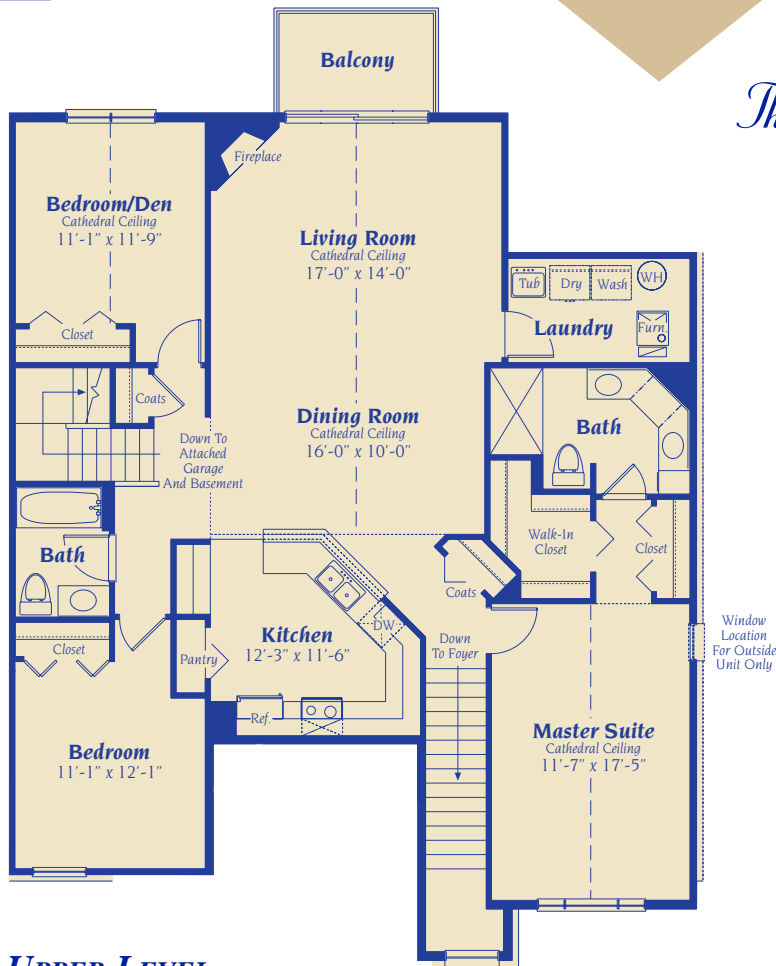


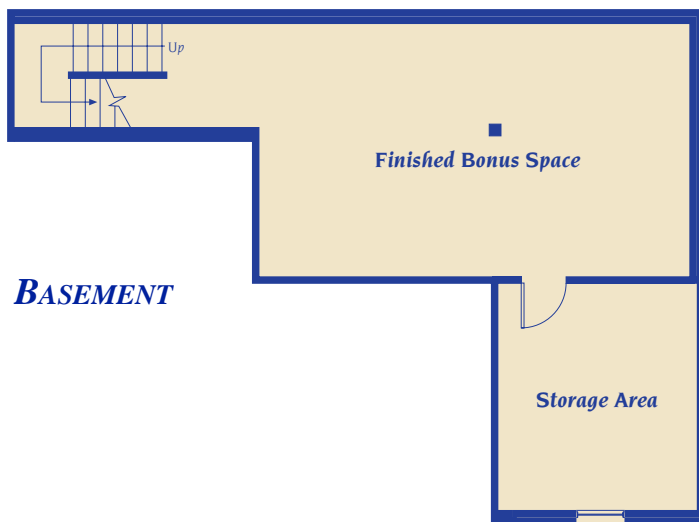
The BLOOMFIELD III

2-STORY FLOOR PLAN
WITH 3RD BEDROOM/DEN

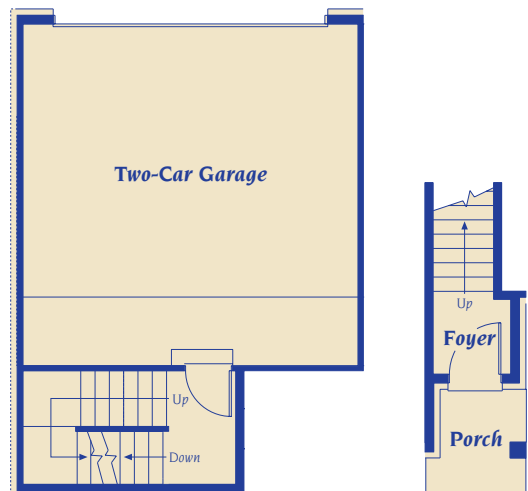
Entertain friends or relax with family in this sophisticated, flexible condominium home. Cathedral ceilings set a luxurious tone in the master suite, living and dining rooms, while a sunny balcony is an ideal warm weather retreat. A third bedroom accommodates overnight guests, or can be used as a quiet den. The generous kitchen with ample storage and counter space is a chef's delight, while the finished basement bonus room is ideal as a private home office, exercise room or entertainment center. The attached, two-car garage and main level laundry offer outstanding convenience.



UPPER LEVEL



BASEMENT



MAIN LEVEL

Enter off the east side of Decker Rd., just south of Maple Rd.

248.366.8887



All information contained herein was accurate at the time of publication. In order to maintain the high degree of quality and incorporate management with greater facility and economy, we reserve the right to make changes in price, specifications, materials or to change or discontinue models without notice or obligation. Floor plan dimensions are approximate. Square footage calculated from exterior wall, master deed reflects interior dimensions. Renderings and illustrations are artist's concept and are only representative.