

LAURA

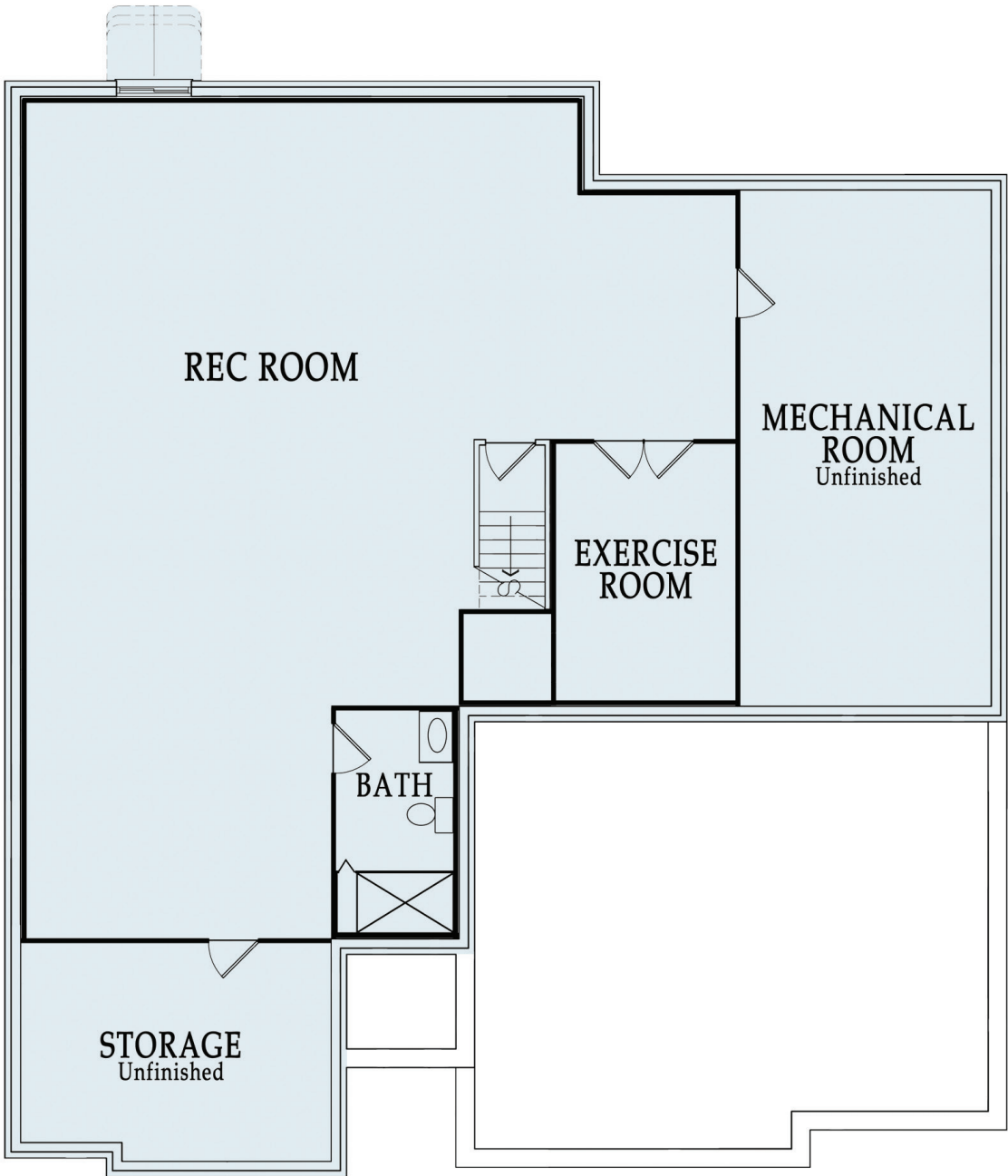
First Level

2,230 sf

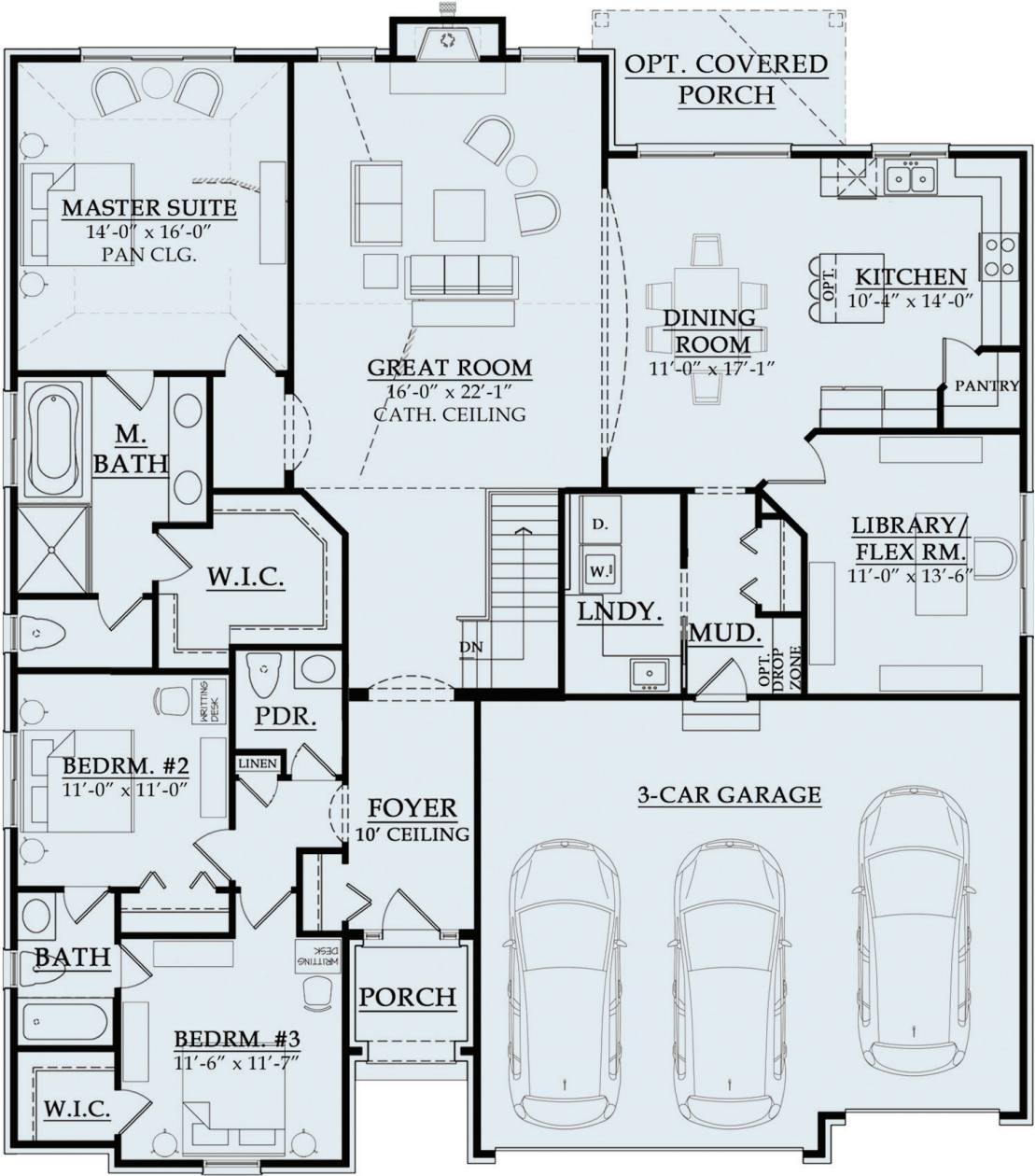


This amazingly efficient ranch home is entered through a recessed covered porch to provide a grand entrance to a formal foyer with a 10’ ceiling. Tucked away to the left are two spacious bedrooms that share a Jack-and-Jill bath. There is also a convenient guest closet and powder room in this area. Continuing into the living space is the great room with its cathedral ceiling and fireplace which is centered between two tall windows. To the left is the spacious owner’s suite with its pan ceiling and triple windows. The owner’s bath is nicely zoned with twin vanities, a soaking tub, separate shower, private water closet and huge walk-in closet. On the opposite side of the great room you’ll find the dining room, U-shaped kitchen with a walk-in pantry and optional island with snack bar seating. The dining room can open to an optional covered porch to bring outdoor living into the space. The Laura plan also includes a secluded library/flex room and a three-car garage which opens to a convenient mud room and spacious laundry.

The lower level basement space may be finished as an option. The plan includes an oversized recreation room for great entertaining along with a full bath, exercise room and storage space.



• OPTIONAL FINISHED BASEMENT



• FIRST LEVEL